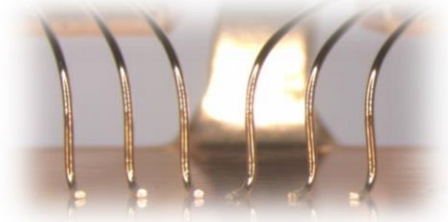


Ultimate Soft Copper Heavy Wire

Feature & Advantage

- ◆ High electrical conductivity
- ◆ High Fusing Current
→ Thinner bonding wire can be used
- ◆ High Thermal Stability
→ Good for high temperature operation
- ◆ Soft & Low work hardening
→ Good bond ability



Physical Property

	TC-GE	TC-E
Young's Modulus (GPa)	54	71
Coefficient of Thermal Expansion ($\times 10^{-6}/\text{degC}$)	16.5	16.5
Resistivity ($\mu\Omega \text{ cm}$) @20degC	1.7	1.7
Density (g/cm^3)	8.93	8.93

Electrical Conductivity & Fusing Current

